

PROJECT UPDATE

Caminada Headland Beach and Dune Restoration Project (BA-45)

Project Summary Over the last 100 years, the Caminada Headland has experienced significant shoreline erosion and land loss to its marsh, wetland, beach, and dune habitats as a result of storm overtopping and breaching, saltwater intrusion, wind and wave induced erosion, sea level rise, and subsidence.

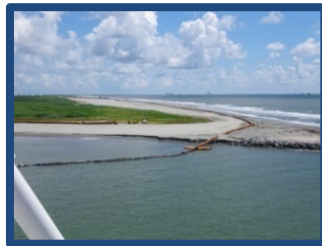


To address this significant land loss rate, averaging over 35 feet per year, the CPRA is utilizing Coastal Impact Assistance Program (CIAP) and 2008 State Surplus funds to create dune and beach habitat by transporting high quality beach compatible sand from Ship Shoal, located approximately 27 nautical miles away, to Caminada Headland. This is the first time that Ship Shoal sand is being used for a restoration project.

Project Benefits Approximately 3.3 million cubic yards of sand will be placed to create and enhance 303 acres of beach and dune, thus reinforcing almost 6 miles of barrier headland habitat. The Caminada Headland provides important habitat for nesting shorebirds as well as migratory birds as it is one of the first available stopover sites during migration. The headland is also critical habitat for the endangered piping plover.

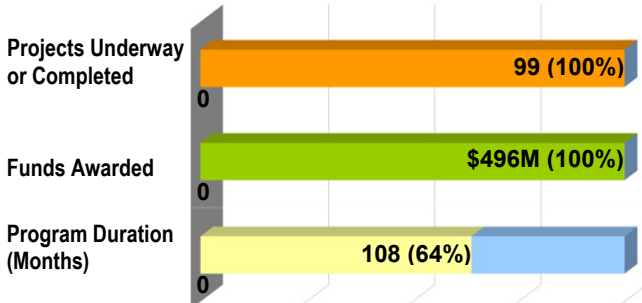


The newly created habitat will also aid in reducing the direct impacts of storm events to Port Fourchon and a Hurricane Evacuation Route along Highway 1, which are located just north



of the project area. Port Fourchon is an invaluable facility for the oil and gas industry, furnishing between fifteen and eighteen percent of the country's oil supply and ninety percent of the Gulf of Mexico's deep water oil production. The port also services the offshore oil, commercial fishing, seafood, shipping, tourism, and recreation industries.

Engineer: Coastal Engineering Consultants
Contractor: Weeks Marine Inc.
CIAP Funds: Louisiana CIAP \$33,000,000
 Terrebonne Parish CIAP \$ 7,000,000
State Surplus: \$30,000,000
Total Funding: \$70,000,000
Location: Caminada Headland, Lafourche Parish, Louisiana.

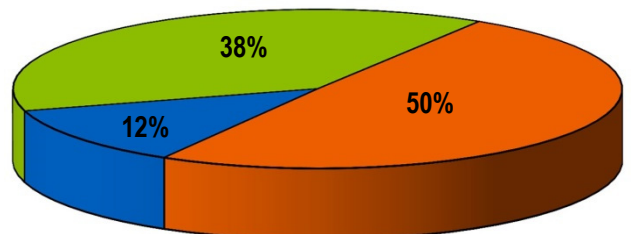


CIAP recipients are encouraged to utilize funds as quickly as possible to reduce the risk of federal cut backs.

State Project Status Summary

Construction Projects				
Project	Planning	Grant	Design	Construction
Lake Salvador Shoreline Protection (BA-15X-2 EB)				Completed
Rockefeller Refuge Shoreline Protection Demo (ME-18 EB)				Completed
CIAP - LA 1 Fourchon to Leeville (BA-55)				Completed
Grand Lake Shoreline Protection (ME-21 EB)				Completed
Barataria Land Bridge Dedicated Dredging (BA-36)				Completed
Gulf Intracoastal Waterway Bank Restoration (TE-43 EB)				Completed
East Grand Terre (BA-30)				Completed
Marsh Creation via Beneficial Use - Marcantel (CS-34)				Completed
Orleans Land Bridge Shoreline Protection (PO-36)				Completed
Central Wetlands Assimilation (PO-73)				
Freshwater Bayou Bank Stabilization (TV-11b EB)				
Caminada Headlands (BA-45)				
MS River Long Distance Sediment Pipeline (BA-43 EB)				
Shoreline Protection Emergency Restoration (BA-0162)				
MS River Freshwater Introduction to Bayou Lafourche (BA-0161)				
Living Shoreline Protection Demonstration (PO-148)				
Non-Construction Projects				
Project	Planning	Grant	Status	
Atchafalaya Long Distance Sediment Pipeline (AT-015)				
Blind River Freshwater Diversion (PO-37 EB)				
Coastal Forest Conservation Initiative (LA-13)				
MS River Delta Management Strategic Planning (MR-16)				
Performance Evaluation and Science Monitoring (LA-12)				
Bayou Lamoque Floodgate Removal (BS-13) Design Only				Completed
Violet Diversion (PO-35 EB)				Completed

Project Status



Complete Under Design
Under Construction



3rd QUARTER 2013 PROGRAM UPDATE



PARISH PROJECT STATUS SUMMARY

Project	Grant Application	Grants Awarded	Project Design	Under Construction
Assumption				
Attakapas Canal Hydrologic Restoration (TE-59)				
Lake Verret Swamp and Lake Rim Restoration (TE-60)				
Calcasieu				
Clear Marais Bank Protection (CS-52)				
Horseshoe Lake Marsh Restoration (CS-41)				
Rabbit Island (CS-44)				
Shoreline Protection at Intracoastal Park (CS-36)	Completed August 2012			
South GIWW Restoration (CS-37)				
Calcasieu Parish Administrative Assistance (CS-67)				N/A
Cameron				
Trosclair Road Repairs (CS-47)	Completed July 2009			
Little Chenier Road (CS-51)	Completed January 2010			
Bank Stabilization from Dugas Cut to Kelso Bayou (CS-48)	Completed July 2010			N/A
West Big Burn Bridge Restoration (ME-26)	Completed July 2010			
East Little Pecan Bayou Restoration (CS-50)	Completed July 2010			
North Mermentau Restoration (ME-30)	Completed September 2011			
South Little Pecan Bayou Restoration (ME-27)				
Dreary Island (CS-43)	Completed December 2012			
South Johnson Bayou (CS-42)				
Iberia				
Acadiana Regional Airport - Admiral Doyle (TV-31)				
Lake Sand Terracing (TV-32)				
Lake Tom Terracing (TV-33)				
Port of Iberia Bridge - David Dubois Rd (TV-30)	Completed May 2013			
Port of Iberia Bridge - Port Rd. Over Commercial (TV-28)	Completed May 2013			
Port of Iberia Bridge - Port Rd. Over Rodere (TV-25)	Completed September 2012			
Vermilion Bay Shoreline Restoration (TV-35)	Completed November 2012			
Weeks Bay/Commercial Canal Feasibility Study (TV-24)	Completed March 2013			
Jefferson				
Bayside Segmented Breakwaters at Grand Isle (BA-50)	Completed September 2012			
Fifi Island Restoration Extension (BA-65)	Completed August 2013			
Goose Bayou Shoreline Protection (BA-51)	Completed September 2011			N/A
Lower Lafitte Shoreline Stabilization at Rigolettes (BA-52)				
Lafourche				
Maritime Forest Ridge Restoration (BA-53)				N/A
Northwest Little Lake Marsh Creation (BA-54)	Completed April 2011			
Small Dredge Program (BA-63)	Completed September 2010			
Livingston				
Bald Cypress/Tupelo Coastal Forest Protection (PO-39)	Completed May 2011			
Hydrologic Restoration in West Lake Maurepas (PO-40)				
Plaquemines				
Fringe Marsh Repair (BA-58)				
Jump Basin Dredging and Marsh Creation (BA-64)				
Tidewater Road Flood Protection (BA-57)	Completed November 2010			
Update of the Plaquemines Coastal Mngmt. Plan (BA-56)				N/A
St. Bernard				
Lake Lery Rim Establishment & Marsh Creation (BS-17)				
Update of the St. Bernard Coastal Mngmt Plan (PO-41)	Completed January 2013			

Project	Grant Application	Grants Awarded	Project Design	Under Construction
St. Charles				
East LaBranche Shoreline Protection (PO-43)				
West LaBranche Shoreline Protection (PO-42)	Completed June 2013			
St. James				
Wetland Wastewater Assimilation Planning (PO-53)	Completed March 2009			N/A
Waterline Booster Pump Station, West Bank (BA-59)	Completed February 2010			
West Bank Wetland Conservation and Protection (BA-61)	Completed April 2010			
East Bank Wastewater Assimilation Plant (PO-45)				
West Bank Wastewater Assimilation Plant (BA-62)				
Waterline Booster Pump Station, East Bank (PO-71)	Completed September 2011			
Culverts Through Existing Berms & Board Roads (NA)				
St. John the Baptist				
West Lac Des Allemands Shoreline Protection (PO-90)				
Reserve Relief Canal Shoreline Protection (PO-46)				
St. Martin				
Bayou Amy Trail and Educational Pavilion (AT-08)				
Beau Bayou Swamp Hydrologic Restoration (AT-10)				
Stephensville Wastewater Assimilation (AT-09)				
St. Mary				
Burns Point Recreation Park Improvements (TV-37)	Completed January 2011			
Deer Island Pass Realignment (AT-07)				
Morgan City Industrial Road (AT-05)				
Planning Assistance and Administration (TV-36)	Completed September 2013			N/A
Point Chevreuil Shoreline Protection (AT-06)				
Thorguson Road Improvements (TV-38)	Completed May 2012			
St. Tammany				
French Property Preservation Project (PO-49)	Completed October 2009			N/A
Mandeville Aquatic Ecosystem Restoration (PO-51)	Completed July 2010			
Green Property Preservation Project (PO-48)	Completed August 2011			N/A
Northshore Beach Marsh Creation/Restoration (PO-70)				
Tangipahoa				
Lake Pontchartrain Shoreline Protection (PO-52)	Completed April 2013			
Terrebonne				
Falgout Canal Freshwater Enhancement (TE-63)				
Vermilion				
Henry Hub Access - Charlie Field Rd. Bridge (TV-46)	Completed April 2011			
Henry Hub Access - Charlie Field Road (TV-50)	Completed February 2012			
Henry Hub Access Improvements - LA 331 (TV-44)				
Intracoastal City Street Improvements (TV-49)	Completed November 2011			
North Prong Schooner Bayou (TV-53)	Completed November 2010			
Oyster Reef at Chenier au Tigre (TV-51)				
Shoreline Protection at Tiger Point (TV-45)				
Shoreline Protection on SW Point at SW Pass (TV-41)				N/A
Vermilion CIAP Assistance and Administration (TV-40)	Completed September 2013			N/A
Weeks Bay/Commercial Canal Feasibility Study (TV-24)	Completed March 2013			

CIAP Contacts

Andrew Beall
CIAP Program
Manager
andrew.beall@la.gov

Chuck Perrodin
Public Information
Director
chuck.perrodin2@la.gov

David Williams
Lead Program
Manager
david.williams@la.gov

Travis Woodard
CIAP Management
Team
travis.woodard@la.gov

Brett Young
CIAP Management
Team
brett.young@la.gov

Craig Rabalais
CIAP Management
Team
craig.rabalais@la.gov

Bridget Zachary
Louisiana FWS
CIAP Liaison
bridget_zachary@fws.gov

Penny Bartnicki
CIAP Branch
Chief
Penny_Bartnicki@fws.gov

CIAP Links



www.coastal.la.gov



www.dnr.louisiana.gov



www.dotd.state.la.us



www.fws.gov



www.csronline.com